

KOBELCO

Cranes Europe

Strength through experience since 1930

Issue 2/Volume1
Spring 2020



COMPANY PROFILE:

**Belgium's Valcke
Prefab Beton**

EUROPE FOCUS:

**Nordic Crane, Keatings,
Balineau and more...**

CRANE NEWS:

**UK's first CKE3000G-2
for dock expansion...**

KOBELCO

STRENGTH THROUGH EXPERIENCE SINCE 1930

KOBELCO G-SERIES

- EU Stage 5 compliant power plant
- Up to 25% fuel consumption thanks to G-mode: G-Engine, G-winch and Auto-Idle-Stop
- Ergonomic, luxurious, spacious cab with joysticks
- Dual pump flow for clamshell, bucket or material handling*
- Efficient transport
- Fast assembly / disassembly
- Tractor type crawlers*
- Over-swing preventative device*
- Low maintenance
- Excellent reliability
- Worldwide service network

*optional items



<http://www.kobelcocm-global.com>

KOBELCO CONSTRUCTION MACHINERY EUROPE BV
FOR EUROPE, RUSSIA, CIS
TEL: +31-(0)36-549-5510
Jos.verhulst@kobelco.com

FOR UK, IRELAND AND SOUTH AFRICA
TEL: +44-(0)1342-301122
Mark.evans@kobelco.com

KOBELCO CONSTRUCTION MACHINERY EUROPE BV

Hello and welcome to the second edition of Kobelco Cranes Europe's customer magazine.

Once again, this issue is packed with stories and features from across the region. Many of which share a common theme, water. Whether we're drinking it, using it to transport people and goods on, or fishing in it, there's no doubt how important this valuable resource is.

Delivering the infrastructure that enables us to do all these things is vital to the prosperity of society, so it is rewarding to see the role Kobelco crawler cranes are playing in doing just that.

Enjoy this issue, and don't forget, we'd love to hear your feedback, so send us your ideas and pictures for a chance to be featured in the next issue.



Masakazu Usami
Division Director Cranes
(Kobelco Construction Machinery Europe)

CONTENTS

04 Customer profile
Family owned and run Valcke Prefab Beton



06 SECH / UK
SECH's new CKE3000G completes its first job in Portsmouth



08 Nordic Crane / Norway
Nordic Crane uses luffing jib for DSV logistics centre



10 Keatings / Ireland
BM700 and CKE110G complete Dinish Wharf expansion



12 Trevi / Austria-Switzerland
CKE900G-2 for run-of-river HPP



14 Q Plant / UK
Fleet of Kobelco crawlers for Frankley WTW



16 Balineau / France
First piling project for new CKE900G-2



18 ConExpo / Spotlight
Photos from last month's ConExpo show in the US
GH Johnson's Gary Charnley



KOBELCO CONSTRUCTION MACHINERY EUROPE B.V. (UK)
Unit 9, The Felbridge Centre, East Grinstead, West Sussex RH19 1XP, UK
Tel: +44-1342-301122

KOBELCO CONSTRUCTION MACHINERY EUROPE B.V. (The Netherlands)
Veluwezoom 15, 1327 AE Almere, The Netherlands
Tel: +31-36-549-5510

KOBELCO CONSTRUCTION MACHINERY EUROPE B.V. (Germany)
Germany, Austria and Switzerland
Tel: +49 (0)172 7946087

DISTRIBUTORS
Russian Federation
FKR Machinery

105187, Russia, Moscow, Room 1, Office 4, Mironovskaya Street
Tel: +7-495-981-4545

Republic of Turkey
Das Otomotiv ve Jeneratör Tic. A.Ş
Gardenya Plaza 5, Kat: 2
34758 Ataşehir - İstanbul - TÜRKIYE

Tel: + (90) 216 456 57 05

People's Democratic Republic of Algeria
Manyi Machinery
Centre des affaires AL-Qods,
bureau 08-07 niveau 04
Chéraga Alger - Algeria.
Tel: +213 (0) 21-343-173

HEAD OFFICE - JAPAN
KOBELCO CONSTRUCTION MACHINERY CO., LTD
Tokyo, Japan
Tel: +81-(0)3-5789-2121

Design: Fit Pixels
Words: Kobelco Marketing Team, Richard High

A perfect fit

Established in 1930 Valcke Prefab Beton is now one of the largest prefabrication construction specialists in Benelux and France, with a fleet of modern Kobelco crawler cranes to match

In 1930, aged just 24, Charles Valcke established a workshop to manufacture concrete tiles, pipes, piles, and cisterns for local farmers. The business quickly expanded to meet the growing demand for prefabricated buildings, including storage barns and milking parlours, from the region's thriving dairy and agricultural sectors.

Capitalising on the rising demand for his products and skills, the young Charles Valcke (Valcke comes from the Dutch, Valkenier – French, Falconier), quickly established the company as a

pioneer in prefabricated concrete construction in Belgium. Business continued to thrive and throughout the 50s it expanded its operations into the industrial sector.

Success followed success, in large part thanks to prefabricated construction's clear advantages - reduced construction times, increased flexibility, quality, and efficiency - and in 1959, Valcke employed its 100th worker and began expanding across Belgium and Northern France. In 1960 it established Armentières-based sister company, Traconord

Prefabrication Beton, to serve the increasing demand of the agricultural and industrial sectors.

Today, with 90 years of construction experience and the fourth generation of the Valcke family in charge, Valcke Prefab Beton/Traconord Prefabrication, is one of the region's most successful prefab manufacturers and contractors. To date it's completed over 20,000 projects, and boasts a head-office and prefab production facility of 250,000m² in Vlamertinge, Belgium, with a fleet of 20 modern Kobelco crawler cranes to match.



Valcke Prefab Beton's Charles Valcke, Managing Director, Kris Heyde, Purchasing Manager, Kristof Recour, Production Manager, Koen Vanreenterghem, Head of Project Execution, on the Kobelco Cranes' stand at Bauma 2019.

"When my great grandfather set up the business in 1930, I'm sure he didn't envisage how big the company would become," said Charles Valcke, the fourth generation of his family to work at the company and current Managing Director. "When he started there were only a couple of employees and no cranes. Now we employ over 400 people and have over 25 cranes in our fleet, including 20 Kobelco crawler cranes."

Family heritage

Following the death of Charles Valcke in 1971, the company was managed by his son Roger and co-

director Jacques Werquin. In 1980, Charles' grandson, Carlos Valcke, joined the management team, and the stage was set for further expansion in The Netherlands and Luxembourg.

Success soon followed and by the 90s Valcke had expanded to such an extent that major investments were needed. In 1997 it built a panel factory with an automatic carousel system and a new 'mega'-concrete plant, alongside a complete renovation of its 'crane park', which strengthened its performance and resulted in the largest construction project to date.



By 2011 Valcke had moved to new offices and showroom, a "life-size business card, built entirely in precast concrete that Showcases exactly the services and products we now offer," according to Charles Valcke.

Crane fleet

Having bought its first Kobelco crawler crane in the 1970s, Valcke has continually upgraded its fleet, which now includes six 100 tonne-capacity CKE900Gs, a 50 tonne-capacity BM500, two 55 tonne

CKE550s, two 60 tonne-capacity BM600s, two 60 tonne-capacity CKE600s, as well as two 70 tonne-capacity BM700s and five 80 tonne-capacity CKE800s.

Its most recent acquisitions include three 100 tonne-capacity CKE900G-2s in 2018, and two CKE900G-2s in 2019. Speaking on the Kobelco Stand at Intermat 2018, former CEO & Managing Director Carlos Valcke said: "With 20 Kobelco cranes in our fleet we know the quality and operational capabilities of these machines very well. The 100 tonne-capacity CKE900G-2 is an easy to operate machine, thanks to its sensitive and smooth operation, with an excellent load chart. The crane suits the size and weight demands of the pre-fabrication construction sector very well, making them an exceptional addition to our fleet."

Looking ahead, Charles Valcke is positive the company will continue investing both in its production facilities and cranes. "We trust the Kobelco name and technology and see a bright future for our relationship and our company."



CKE3000G for port expansion



Key role for SECH's new Kobelco CKE3000G crawler crane as it starts first major contract in Portsmouth, UK

Crane rental company SECH's 300 tonne capacity Kobelco CKE3000G crawler crane is working on its first major lifting and foundations contract in Portsmouth Harbour, having arrived at the site by barge in November 2019.

The CKE3000G, currently the largest of Kobelco's CKE range in Europe, is working for Knights Brown as part of an ambitious, £19 million investment in cruise and ferry facilities, including levelling out and increasing the length of the cruise berth to

255m and building an additional dolphin.

Speaking ahead of work starting, Matt Cox, SECH's managing director said: "Our new CKE3000G represents a significant investment in our future and signals our continued commitment to the UK lifting and foundations sector.

"This first major contract highlights the CKE3000G's excellent drum and slewing speeds, making it a very nimble crane for its size. It's also a very solid, well-engineered

machine, which makes it ideal for tunnelling, foundation and marine work, and I look forward to being able to take on yet more new and interesting work across the UK."

Construction

The CKE3000G began its journey to Portsmouth from SECH's yard in Hockley, Essex on eight low loaders via Southampton docks. Assembled using the yard crane the CKE3000G was tracked onto a barge and used its own rigging to place the counterweight and complete the assembly.

The barge was then towed to Portsmouth, where it was fitted with a BSP CG300 hydraulic pile driving hammer, which has a drop



weight of 20 tonnes, a 16-tonne shroud and a maximum impact weight of 300 tonnes.

The CG300 is being used to drive 21 piles, of up to 33m in length and 1.2m in diameter, into the seabed - a 2m layer of silt sitting on a 2m layer of clay, which sits above a bed of sand. Once installed, up to 14m of the pile will sit below water, with 3m above

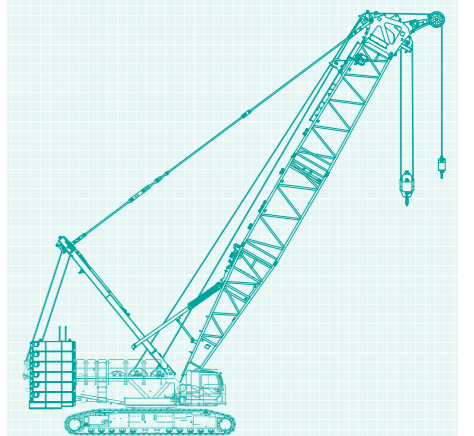
the water line and 16m below bed level. For the dolphin the CKE3000G and BSP CG300 will drive the central pile before the 61-tonne carousel structure is lifted over it.

The carousel will then be used as the temporary works structure during the driving of the remaining six piles, then remain in place as the permanent structure. For the

berth extension, the tubular piles, which weigh between 30 and 60 tonnes, are driven into the ground before being topped off in-situ.



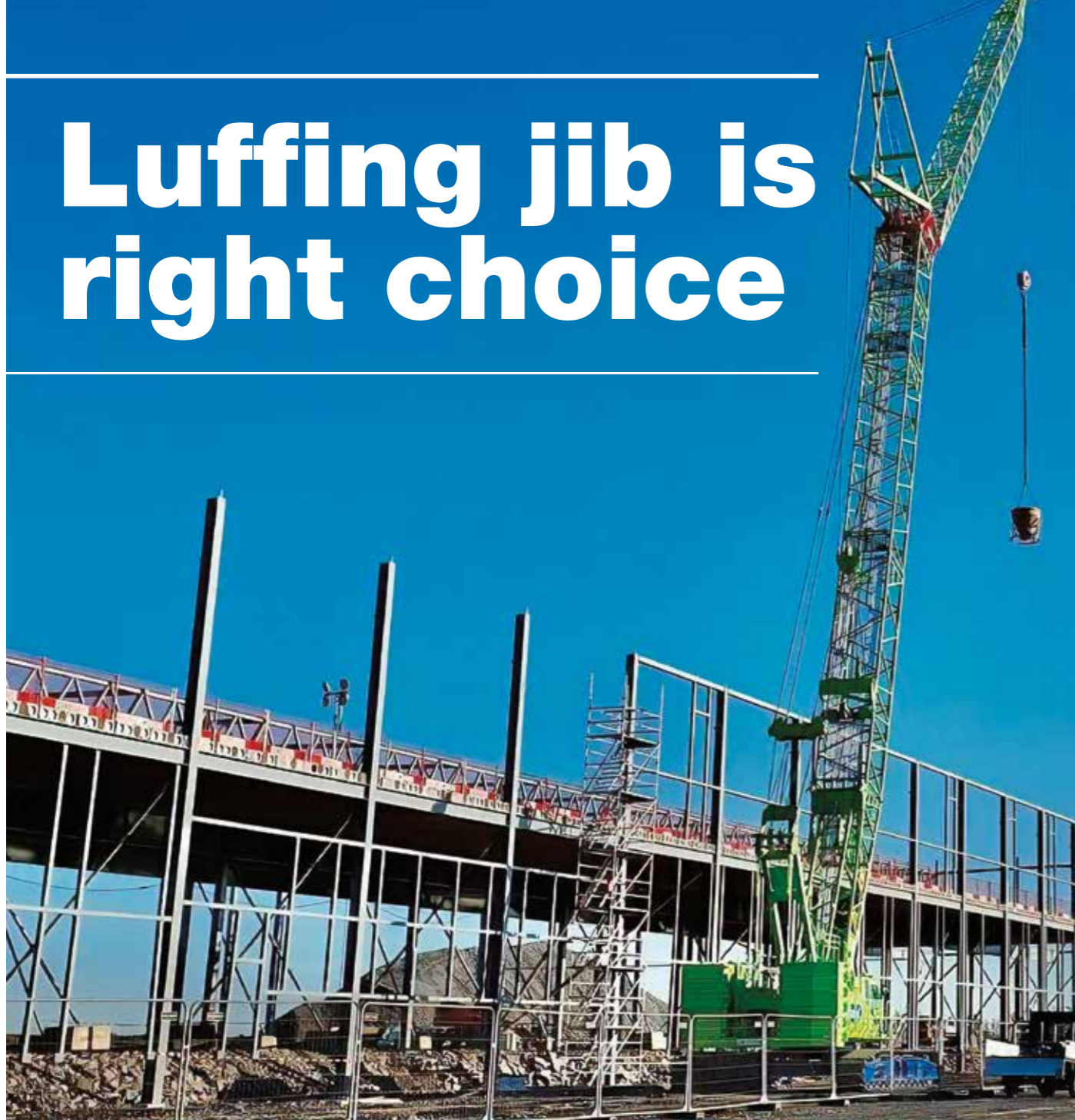
CKE3000G



ENGINE: STAGE IV/TIER 4 FINAL

MAX LIFT CAP: 300 TONNES

Luffing jib is right choice



CKE1350G-2's luffing jib is perfect solution for extended lift during construction of logistics centre for DSV

Nordic Crane's new Kobelco CKE1350G-2 crawler crane is using a 32m-long main boom, together with a 32m-long luffing jib, to complete construction of a new, "state-of-the-art" logistics and distribution centre on the outskirts of Oslo, Norway for DSV, Denmark's largest transport - road, rail, air and sea - and logistics provider.

The 150-tonne maximum capacity CKE1350G-2, the first Kobelco crawler crane in Nordic Crane's rental fleet, is working for pre-cast concrete producer Contiga Heidelberg Cement at the site, which is situated on the outskirts of Oslo close to the city's ring road and transport network.

Having been delivered to Nordic



extended boom configuration and the CKE1350's excellent manoeuvrability, once assembled there is no need to extend or retract the outriggers every time it needs to move around the site.

Another plus when using the luffing jib is that the CKE1350G-2 can work closer to the structure under construction thanks to the ability to raise and lower the jib between 68 and 88 degrees.

Commenting on the job, Nordic Crane's General Manager, Trond Strøm, said: "The CKE1350G-2's excellent manoeuvrability and versatile luffing jib/main boom combination have proved to be the right choice for this job. We have been impressed with the after sales service of the Kobelco team and look forward to using our new CKE1350G-2 on the next job and strengthening our relationship with Kobelco Cranes further."

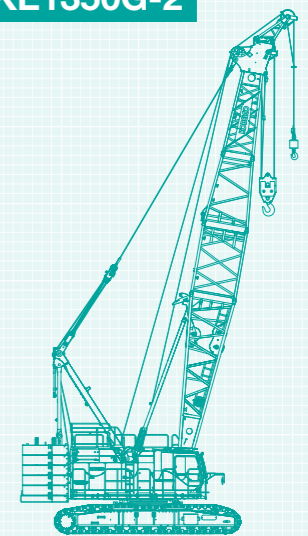
Crane in September last year (2019), the crane was assembled and tested under the supervision of Kobelco's engineering team at the company's depot. Once this was complete the CKE1350G-2 was moved the short distance to the site in October, using a step deck/drop trailer and six "standard" flatbed trailers from Nordic Crane's own fleet, where it remained until the end of February.

The CKE1350G-2's duties at the site include lifting pre-cast concrete

and steel elements of up to 15 tonnes to a maximum distance of 26m and a height of 8m for the construction of the logistics and transport hub's storage facilities.

To complete the lifts the CKE1350G-2 has been fitted with a 32m-long main boom and 32m-long luffing jib, which thanks to the cable guy support at the top of the boom allows for easy erection of the rear strut without the need of an additional crane during assembly. Thanks to the

CKE1350G-2



ENGINE: STAGE IV/TIER 4 FINAL

MAX LIFT CAP: 150 TONNES

Across the generations

Kobelco BM700 and CKE1100G crawler cranes work together to complete Dinish Wharf expansion project in Castletownbere, Ireland

Marine, civil engineering and building contractor Keating Construction is using a Kobelco BM700, supplied by Northern

Ireland's Ideal Form Crane Hire, to complete the expansion of Dinish Wharf in Castletownbere, County Cork, Ireland..

The 65-tonne capacity BM700, which has over 20,000 hours on the clock, is working alongside Keating Construction's own 100-tonne capacity CKE1100G to install 44, 900 mm diameter piles, weighing between 10 and 12 tonnes, at Castletownbere for



Ireland's Department of Agriculture, Food and the Marine.

The €23 million (£19.95 million) expansion, which includes a new 216m-long quay structure, comprised of 15m-long 1016 tubular piles, a sheet piled anchor wall and precast elements that will



form the new quay's face, dredging 55,000m³ of materials, two new breakwater structures and a reclamation area for quay storage, will double workable quay space, enabling significant expansion in fish landings, on-shore processing and general marine activity at the port, including facilitating landings by vessels up to 100m long.

Working on a jack-up barge, the BM700 is fitted with a 42.7m jib and 23.6 tonnes of counterweight. Duties include lifting reinforced circular piling frames onto a floating barge and pitching of 21m-long AS 500 straight web sheet piles, which form a closed cylindrical structure to retain a soil fill. A total of 108 sheet piles make up the cell cofferdam at the end of the harbour's breakwaters, with a total of four cells to be constructed.

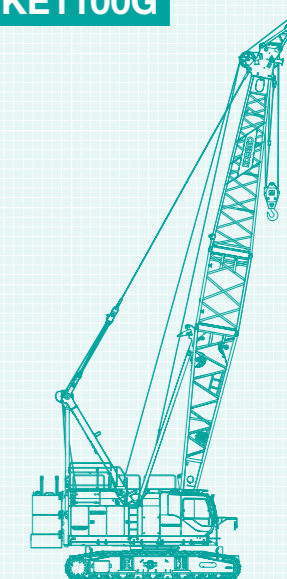
To drive the sheet piles into the rock, the BM700 is using an ICE 1423C vibrating piling hammer, which has a head weight of 4.5

tonnes at a radius of 17m. Once the cell is complete the BM700 removes the inner cell frame in four sections, with each section weighing approximately 9 tonnes.

Keating Construction's CKE1100 has been fitted with a 42.7m jib and 34.6 tonnes of counterweight for the project. Duties at the site include lifting precast concrete elements, which can weigh up to 15.5 tonnes, off-loading/loading of 20m-long, tubular and sheet piles weighing up to 11.5 tonnes, driving of tubular piles using a 14.5 tonne BSP CX85 piling hammer.

Other duties include servicing a pile top drill rig, drilling 4m into the rock head, and lifting concrete elements, formwork and rebar.

CKE1100G



ENGINE: STAGE IV/TIER 4 FINAL

MAX LIFT CAP: 110 TONNES



Trevi engineers prepare to transport the Kobelco CKE900G-2 across the narrow bridge at the Ovella weir complex on the River Inn, Engadine, Switzerland



The Kobelco CKE900G-2 waits to cross the narrow bridge at the Ovella weir (left of picture) complex on the River Inn, Engadine, Switzerland

CKE900G-2 for HPP project

Italian contractor Trevi uses CKE900G-2 during construction of GKI hydro-power plant on Swiss/Austrian border

The 90-tonne capacity Kobelco CKE900G-2 crawler crane arrived at the Ovella weir complex on the River Inn, in Engadine, Switzerland in November last year (2019).

The 15m high weir, part of the Gemeinschafts Kraftwerk Inn (GKI

- The Inn Community Power Plant: storage space and weir system, water tunnel and power house), is being constructed for Engadiner Kraftwerke / Ouwras Electricas d'Engiadina between Martina, in Austria and the Kajetan Bridge near Ovella, and will feed water to the

power plant in Prutz via a 22.6 km-long head race tunnel.

The Stage IV/Tier 4 Final CKE900G-2, which has completed over 500 hours work at the site so far, was delivered with a 24.4m main boom and auxiliary sheave, has been used primarily to lift 25m-long reinforcement cages for the project's piling works.

However, geological conditions in the area proved more difficult than expected and the CKE900G-2 will be retro-fitted with a 36.6m main boom and auxiliary sheave this month (January).

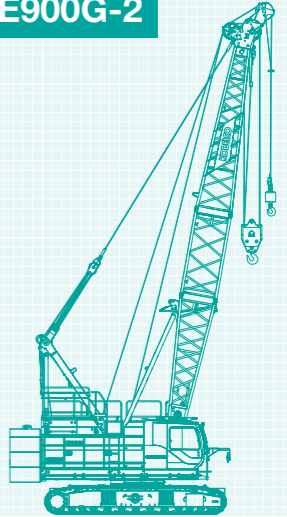




Once across the river, the CKE900G-2 was used primarily to lift 25m-long reinforcement cages for the project's piling works

The narrow bridge that provided access to the site meant the CKE900G-2 kept its crawlers retracted at 3.5m before crossing and was only able to travel with the 10 tonne counterweight, carbody and base boom over the bridge, with all the other parts, including the boom, assembled once it had reached the other side. Once it had crossed, the tracks were extended to 5.13m ready to start work.

The CKE900G-2 is scheduled to finish work in April this year, with the project due for completion in 2023.

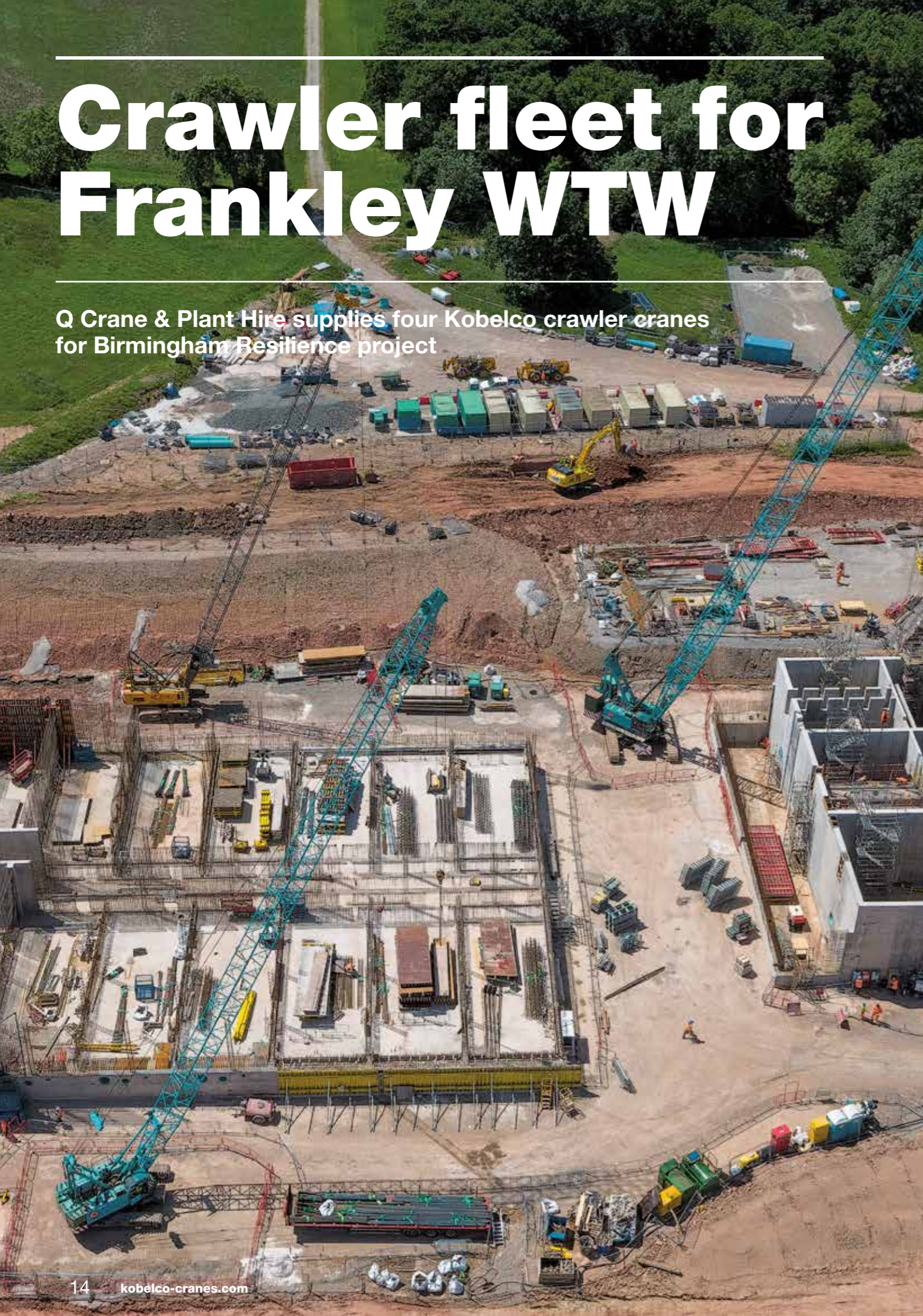
CKE900G-2



-  ENGINE: STAGE IV/TIER 4 FINAL
-  MAX LIFT CAP: 100 TONNES

Crawler fleet for Frankley WTW

Q Crane & Plant Hire supplies four Kobelco crawler cranes for Birmingham Resilience project



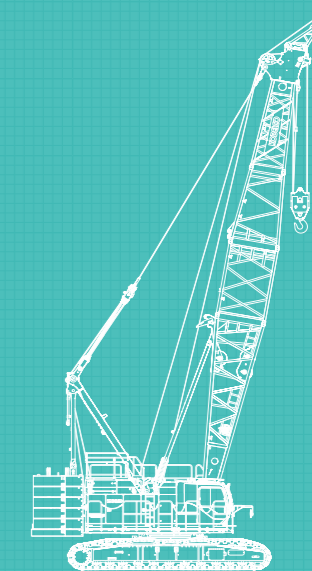
Oldham-based crane rental company Q Crane & Plant Hire has supplied a fleet of four Kobelco crawler cranes, including a CKE1350G, a CKE1100G, and two CKE800Fs, to work on Severn Trent Water's Frankley Water Treatment Works at Frankley, Birmingham.

The cranes, which have maximum lifting capacities of 135, 110 and 80 tonnes respectively, are being used to move precast concrete elements of the waste-water-storage tanks, control room and other structures, as well as formwork, rebar and piling reinforcement cages.

Once complete, the plant will treat water from the Elan Valley in Wales, which arrives at Frankley Reservoir by gravity feed along the Elan aqueduct with a gradient of 1 in 2,300m and supplies drinking water to Birmingham and the surrounding area.

The DNM Alliance (North Midland Construction and Doosan Enpure) was awarded the £100 million contract to design and build a new water treatment plant at Frankley, part of Severn Trent Water's £300 million Birmingham Resilience Project. Work started in late 2017, with completion scheduled for 2020.

CKE1350G



ENGINE: STAGE IV/TIER 4 FINAL

MAX LIFT CAP: 150 TONNES



First job for Balineau's CKE900G-2

CKE900G-2 starts work on first piling project in Arcachon Basin, France.

French maritime contractor Balineau's new, 100 tonne capacity CKE900G-2 is installing sheet piles in Lège-Cap Ferret during the reconstruction of a 60-year-old yachting marina.

To complete the works, the Stage IV/Tier 4 Final compliant CKE900G-2 is fitted with an ICE 20RF Resonance Free Vibratory Hammer to install hundreds of U-shaped PU12 piles for a new, 540m-long wharf wall, with the 3.8 tonne ICE 20RF driving the



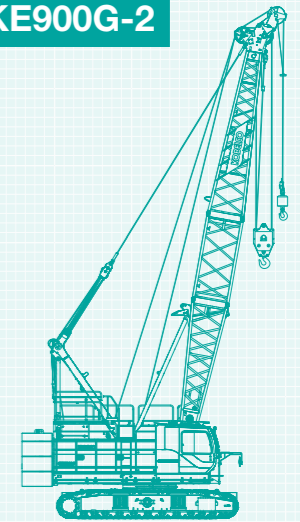
11m-long, 7.3 tonne piles 7m into the ground.

The CKE900G-2, the second Kobelco crawler crane in Balineau's fleet, was delivered with a main and auxiliary winch, with maximum line pulls of 208 kN (21.2 tonne force) and 112 kN (11.4 tonne force) respectively, a free-fall system, 26 mm diameter wire rope, 46m-long main boom, runner, 35 tonne hook-block and 11 tonne ball-hook. Extra safety features include a 500 mm walkway, with handrail, running along the left- and right-hand sides of the machine.

The CKE900G-2 arrived in March, having been shipped first to Barcelona from Japan. From there the 100-tonne capacity crawler crane was transported to Balineau's depot at Quai de Brazza (Brazza Quay) in Bordeaux, where

it was assembled, inspected and tested before being transported to the Arcachon Basin (Bassin d'Arcachon) on France's Atlantic Coast, near the Pila Dune (Dune du Pila), the highest dune in Europe.

CKE900G-2



ENGINE: STAGE IV/TIER 4 FINAL

MAX LIFT CAP: 100 TONNES

KOBELCO

SK210D car dismantler scale model



Visit the Kobelco Fanshop today!

www.kobelcofanshop.com



NEW Gift vouchers





The Kobelco Showtime team visited the US last month (March) with the arrival of ConExpo, where visitors to the stand could enjoy some good ol' fashioned hospitality in our Saloon Bar, try the bucking bronco and see the CKK3000G (CKE3000G) "in the iron" for the first time state-side!



Industry focus: Gary Charnley

Gary Charnley, technical sales manager at UK-based GH Jonson, is a crane industry legend. Starting his career 47 years ago at 17 with P & H Crane Hire in Barrow-in-Furness driving a 6 ton (5.4 tonne) capacity Iron Fairy Onyx, before working around the world, including Africa and the Middle East and on some of the UK's most prestigious projects, including Tate Modern and the 2012 London Olympics.

"I like trucks, caravanning and my work," says Gary, who started "at the bottom" before working his way up. "I've always had good people around me, people who want to share their experiences and knowledge, and that's what I've tried to do too, because what good is knowledge, if you're not prepared to share it?" To that end Gary is passionate about getting experience in the field, although he acknowledges that learning in the classroom is valuable. "A two-week course is a starting point, as is reading the operators manual. I highly recommend both, but going out and putting what you know into practice and using the manual as a tool is far better in terms of widening your knowledge base, especially if you're working with a good team who can share their knowledge."

Looking ahead, Gary is certain what's missing. "Apprenticeships are the future of the industry. I applaud companies that offer them. We need to attract the best, brightest youngsters, but we need to give them practical experience with the whole lifting team, not just in the crane, but outside the cab too. There needs to be more recognition of what you learn on the job, alongside what the CITB and manufacturer's training courses offer. The future, is in how we bring all this together!" Watch this space.



KOBELCO

KCROSS

- Crane Remote Observation Satellite System -



KOBELCO has developed a remote operation management system for our cranes. Machines fitted with this system transmit working condition, location, and maintenance history to provide owners with fact-based information that gives tremendous advantages for their asset management.

Main Functions



> Acquire Working Condition and Location of the Fleet

The system is based on satellite mapped images, Internet connection, and other means to remotely monitor a crane's working condition and its location. This information is useful in planning maintenance schedules and providing guidance to operators, helping to ensure that crane owners can maximize their fleet efficiency.



> Managing Safety/Operational Records and Monitoring Working Status

Crane owners can monitor and record the working condition and operational status of onsite machines on entire fleet basis, promoting greater crane safety.



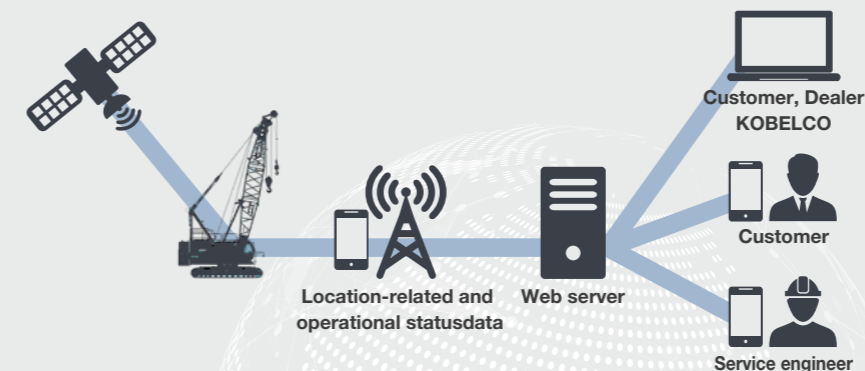
> Remote Failure Diagnosis

It is possible to narrow down possible failure causes quicker and more accurately by remotely accessing to the current and historical status of the machine, helping to minimize the machine downtime.



> Preventive Maintenance Ensures Good Machine Condition and Protects Value

The system recommends appropriate parts replacement timing based on the machine working hour. Regular maintenance can help the machines running at peak performance at all times.



Viewing of machine data via the Internet allows provision of complex machine data

Using the Internet, customers can check on a crane's operational status from the office, and its location can be checked with GPS. Operation data such as whether or not a crane is in operation, total operating and idling hours, etc., is displayed in easy-to-read graph and table formats.



Location display



KCROSS reports (Possible to customize data)

Detailed Machine and Operation Data Can Be Accessed over the Internet

Operating data for a given crane can be accessed and accurately monitored from the Internet terminal in the crane owner's office.

Main Data Handled

- Map: Shows past and latest locations and travel history of all machines in the owner's fleet.
- Performance record: Hours of operation, Lift operations, and Safety record in the period of a day, a week, or other desired span.
- At-a-glance function: Outputs a report (in the form of a record log or sheet) that shows whether or not the machine is currently operating, its total operating hours, and other operating data.



Operation data can be received on a mobile phone When necessary, this system can send data as a text message to a mobile phone



Equipment required

- IT controller
- IT antenna, GPS antenna
- Set-up package (including bracket, signal relay harness and software)
- Computer with broadband connection for internet access (Microsoft IE6.0)
- Excel software (Microsoft Office 2000 or later) to view downloaded documents

Equipment required

- KOBELCO hydraulic crawler cranes, including some existing models

KOBELCO

KOBELCO CONSTRUCTION MACHINERY EUROPE B.V. (The Netherlands)

Veluwezoom 15, 1327 AE Almere, The
Netherlands
T: +31-36-549-5510

European countries & Israel



Sales: Jos Verhulst
M: +31-(0)6-5346-8439
E: jos.verhulst@kobelco.com

European countries & Israel



Service & Technical support:
Rene Kraakman
M: +31-(0)6-5335-3552
E: rene.kraakman@kobelco.com

European countries & Israel



Spare parts: Jo-Anne Lehmann
T: +31-(0)36-549-5510
E: joanne.lehmann@kobelco.com

European countries & Israel



Service & Technical Support:
Marcel Thole
M: +31-6-2123-4180
E: marcel.thole@kobelco.com

Russia and Turkey



**General Coordinator
Sales & Marketing:**
Takashi Yanagisawa
T: +31-(0)36-549-5510
E: yanagisawa.takashi@kobelco.com

KOBELCO CONSTRUCTION TECHNICAL TEAM



Manager Engineering Dept:
Hiroyuki Nishikawa
T: +31-(0)36-549-5510
E: nishikawa.hiroyuki1@kobelco.com

European countries & Israel



**Senior Application/Design
Engineer: Jan Sytstra**
T: +31-(0)36-549-5510
E: jan.sytstra@kobelco.com

UK, Ireland & Africa KOBELCO CONSTRUCTION MACHINERY EUROPE B.V. (UK)

Unit 9, The Felbridge Centre, East
Grinstead, West Sussex,
RH19 1XP, UK
T: +44-1342-301122



Sales: Mark Evans
M: +44-(0)-7880-381310
E: mark.evans@kobelco.com

UK, Ireland & Africa



Sales: Alex Burt
M: +44-(0)-7471-994460
E: alex.burt@kobelco.com

UK, Ireland & Africa



Service & Technical support:
James Mcculley
M: +44-(0)-7795-552182
E: james.mcculley@kobelco.com

UK, Ireland & Africa



Service & Technical support:
Sam Clarke
M: +44-(0)-7879-554686
E: sam.clarke@kobelco.com

UK, Ireland & Africa



Spare parts: Clive Harber
T: +44-(0)-1342-301122
E: clive.harber@kobelco.com

KOBELCO CONSTRUCTION MACHINERY EUROPE B.V. (Germany) Germany, Austria and Switzerland



**Business Development &
Sales: Daniel Hohmann**
M: +49 (0)172 7946087
E: daniel.hohmann@kobelco.com

KOBELCO CONSTRUCTION MACHINERY CO., LTD.



**Marketing & Product
Development: Detlef Brueckner**
M: +49 170 4590515
E: detlef.brueckner@kobelco.com